



**Vigor610**  
**Wireless Adapter**  
**Quick Start Guide**

Version: 1.1

Date: 2007/12/21

Please visit [www.draytek.com](http://www.draytek.com) to get the newly updated manual at any time.

## Copyright Information

### Copyright Declarations

Copyright 2007 All rights reserved. This publication contains information that is protected by copyright. No part may be reproduced, transmitted, transcribed, stored in a retrieval system, or translated into any language without written permission from the copyright holders. The scope of delivery and other details are subject to change without prior notice.

### Trademarks

The following trademarks are used in this document:

- Microsoft is a registered trademark of Microsoft Corp.
- Windows, Windows 95, 98, Me, NT, 2000, XP, Vista and Explorer are trademarks of Microsoft Corp.
- Apple and Mac OS are registered trademarks of Apple Inc.
- Other products may be trademarks or registered trademarks of their respective manufacturers.

## Safety Instructions and Approval

### Safety Instructions

- Read the installation guide thoroughly before you set up the card.
- The wireless card is a complicated electronic unit that may be repaired only be authorized and qualified personnel. Do not try to open or repair the wireless card yourself.
- Do not place the wireless card in a damp or humid place, e.g. a bathroom.
- The wireless card should be used in a sheltered area, within a temperature range of +5 to +40 Celsius.
- Do not expose the wireless card to direct sunlight or other heat sources. The housing and electronic components may be damaged by direct sunlight or heat sources.
- Do not deploy the cable for LAN connection outdoor to prevent electronic shock hazards.
- Keep the package out of reach of children.
- When you want to dispose of the wireless card, please follow local regulations on conservation of the environment.

### Warranty

We warrant to the original end user (purchaser) that the wireless card will be free from any defects in workmanship or materials for a period of one (1) year from the date of purchase from the dealer. Please keep your purchase receipt in a safe place as it serves as proof of date of purchase. During the warranty period, and upon proof of purchase, should the product have indications of failure due to faulty workmanship and/or materials, we will, at our discretion, repair or replace the defective products or components, without charge for either parts or labor, to whatever extent we deem necessary to restore the product to proper operating condition. Any replacement will consist of a new or re-manufactured functionally equivalent product of equal value, and will be offered solely at our discretion. This warranty will not apply if the product is modified, misused, tampered with, damaged by an act of God, or subjected to abnormal working conditions. The warranty does not cover the bundled or licensed software of other vendors. Defects which do not significantly affect the usability of the product will not be covered by the warranty. We reserve the right to revise the manual and online documentation and to make changes from time to time in the contents hereof without obligation to notify any person of such revision or changes.

### Be a Registered Owner

Web registration is preferred. You can register your Vigor wireless card via <http://www.draytek.com>.

### Driver Updates

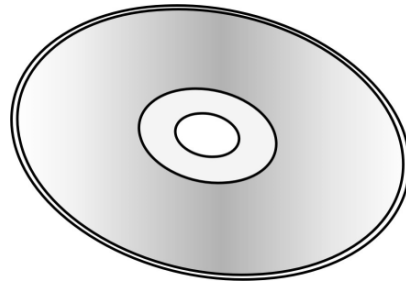
Please consult the DrayTek web site for more information on newest driver, and documents.

<http://www.draytek.com>

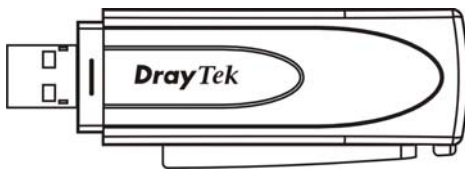
# 1. Package Content



**1** Quick Start Guide



**2** CD



**3** Wireless Adapter



**4** USB Cable and the Bracket

## 2. Installing USB Driver

---

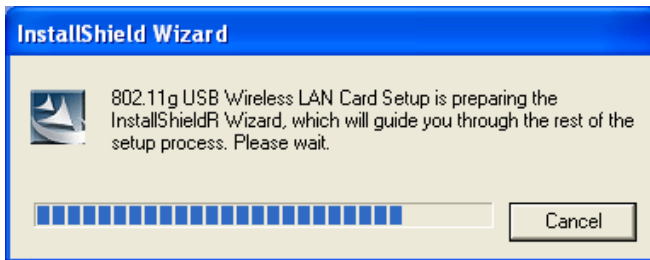
**Important !!** Before you installing USB driver for Vigor610, do not insert the wireless adapter in your computer.

---

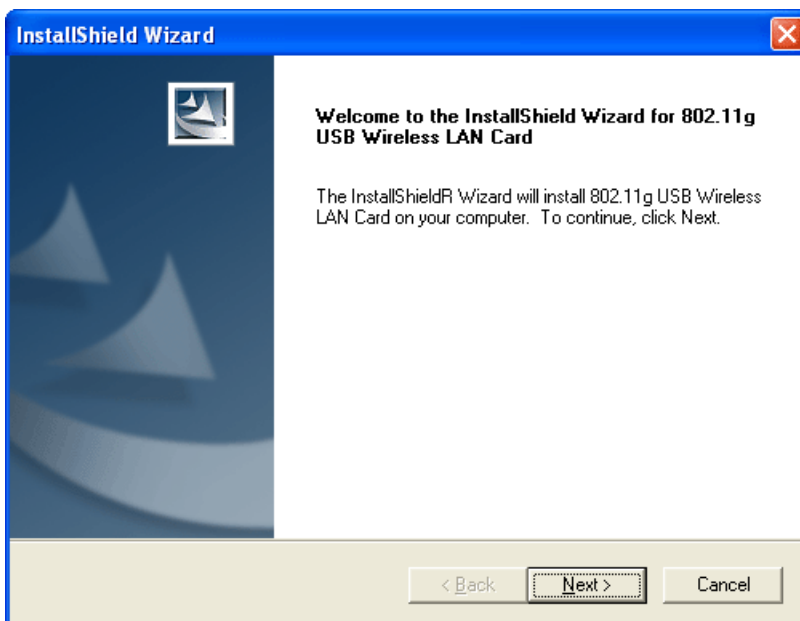
### For Windows XP

Follow the step below to install USB driver.

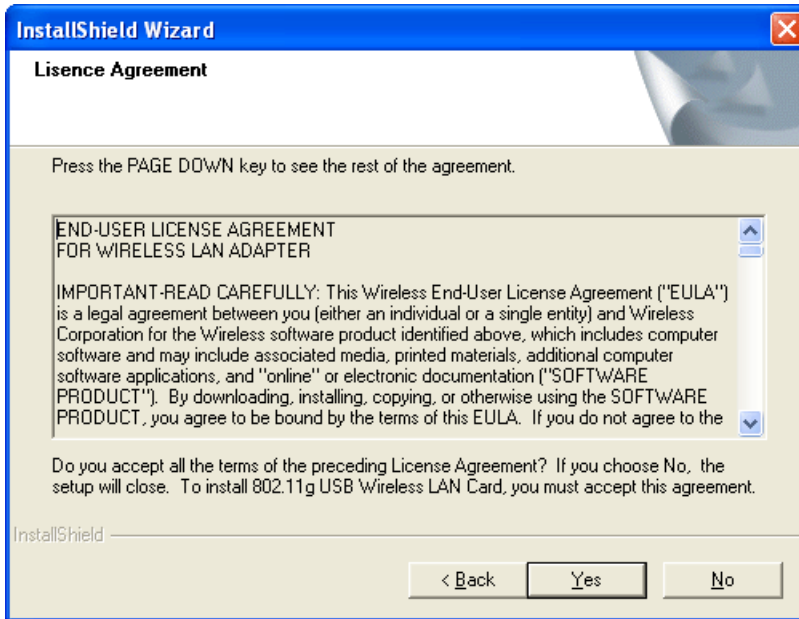
1. Insert the CD into your computer. The following screen will appear.



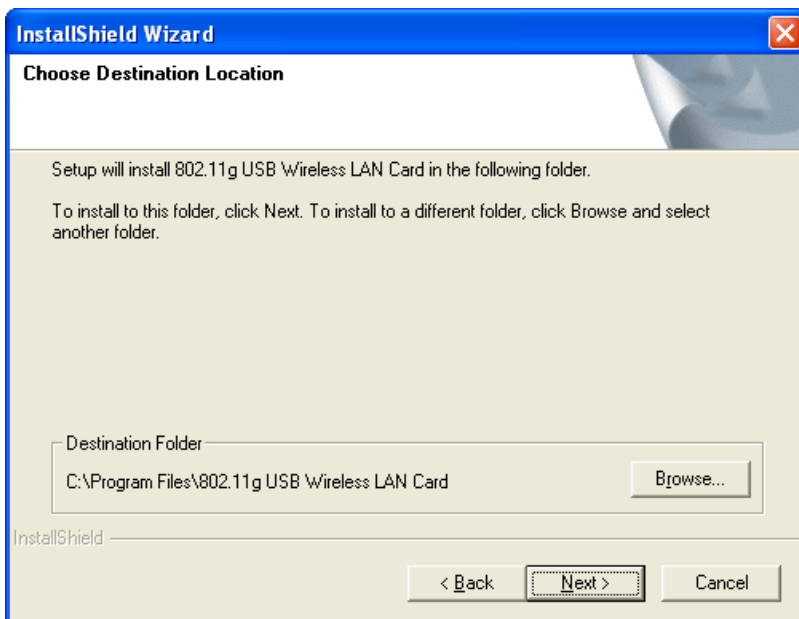
2. The welcome screen will appear as follows. Please click **Next**.



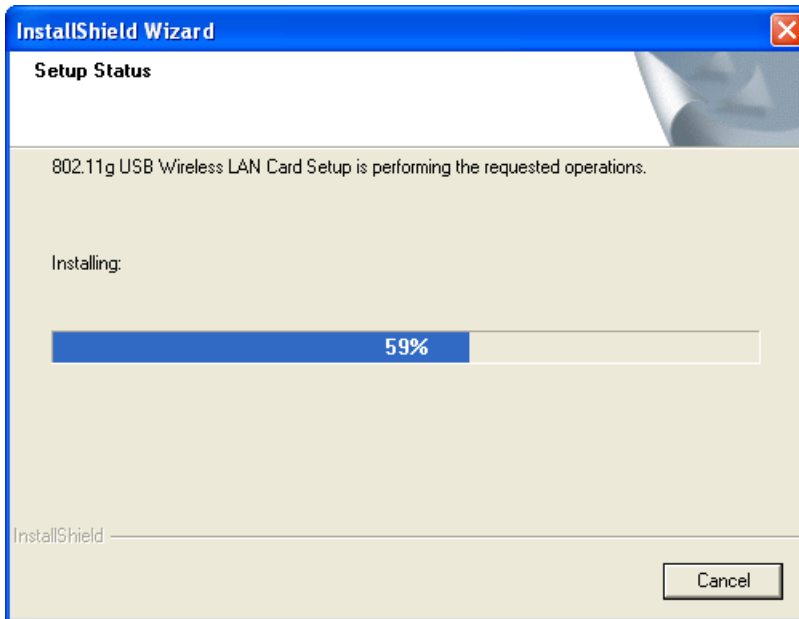
3. In this page, you have to choose **Yes** to continue the installation. If you do not accept the agreement, you can click **No** to exit the wizard. And the driver installation will not be installed to your computer.



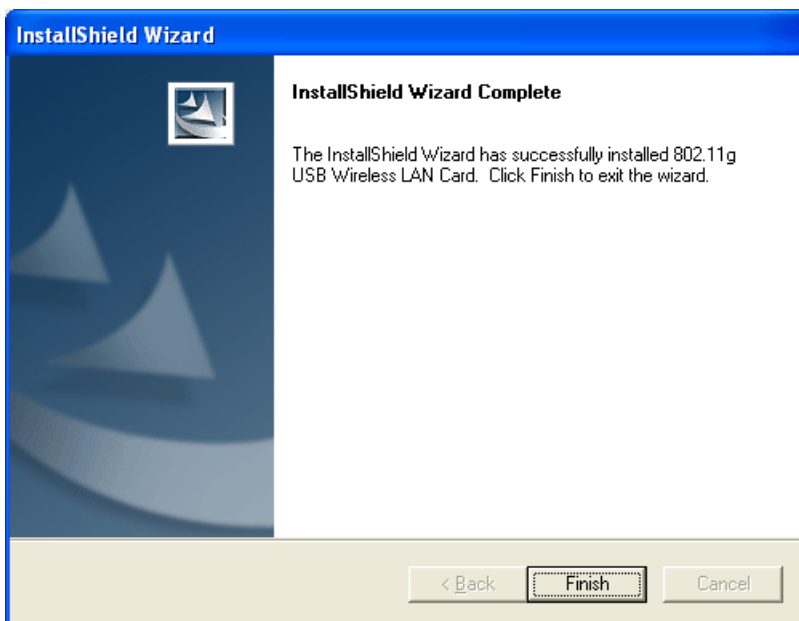
4. The default destination folder will be specified in this page. Also, you can click **Browse...** to choose another folder for storing the driver. Click **Next**.



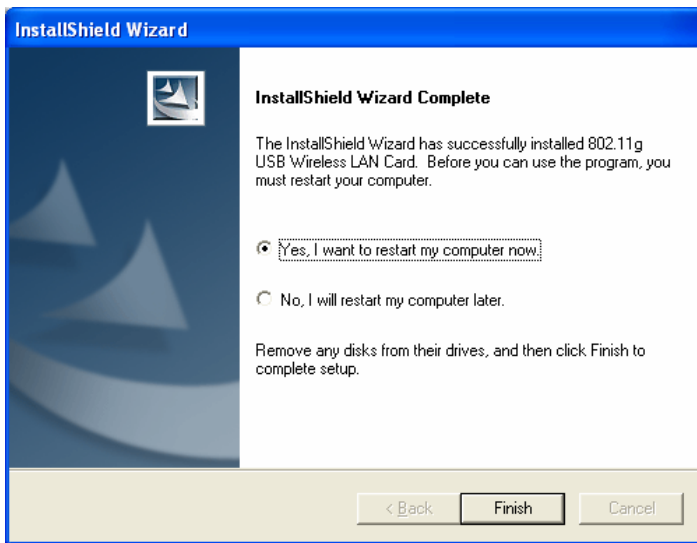
5. Now, the program is executing the installation by copying corresponding files to your computer.



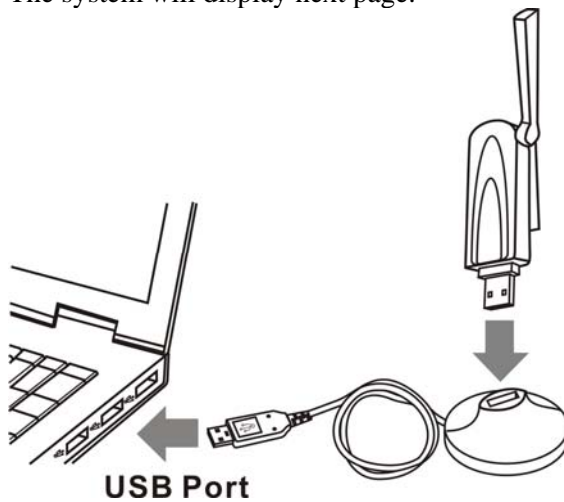
6. When the file copying is completed, the following screen will appear. Please click **Finish**.



- Now the system will ask you to restart your computer to complete the whole installation. After choosing the proper setting, please click **Finish**.



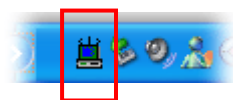
- After restarting your system, now insert Vigor610 (the wireless adapter) into your computer. The system will display next page.



- The system will find out the hardware (wireless LAN card) automatically. When it locates, a message will be shown on the system tray.



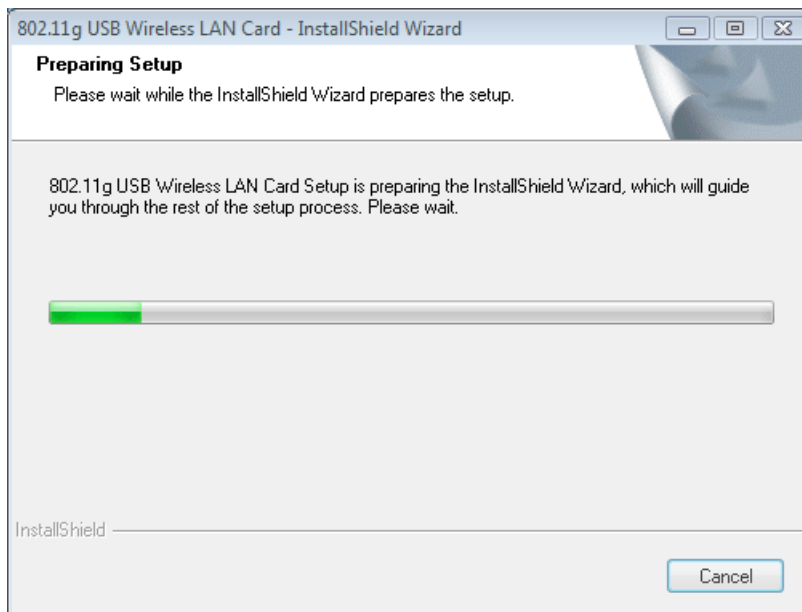
- Now, you can find the wireless LAN card icon in the system tray. Double click it to open the configuration window of Vigor610 wireless adapter.



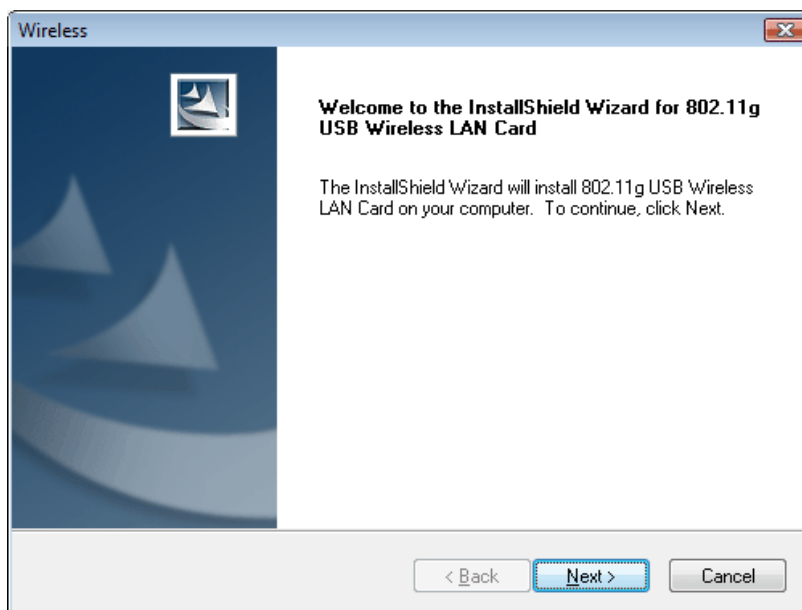
## For Windows Vista

Follow the step below to install USB driver.

1. Insert the CD into your computer. The following screen will appear.



2. The welcome screen will appear as follows. Please click **Next**.

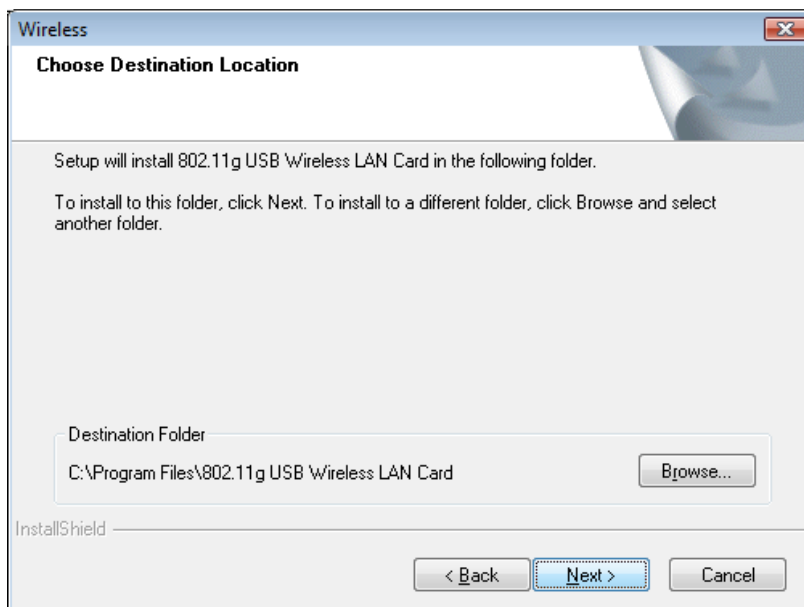




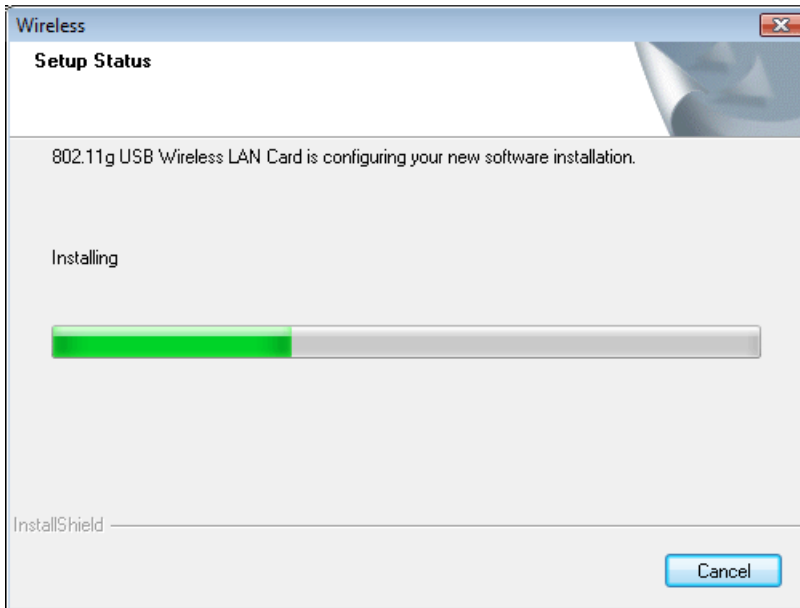
3. In this page, you have to choose **Yes** to continue the installation. If you do not accept the agreement, you can click **No** to exit the wizard. And the driver installation will not be installed to your computer.



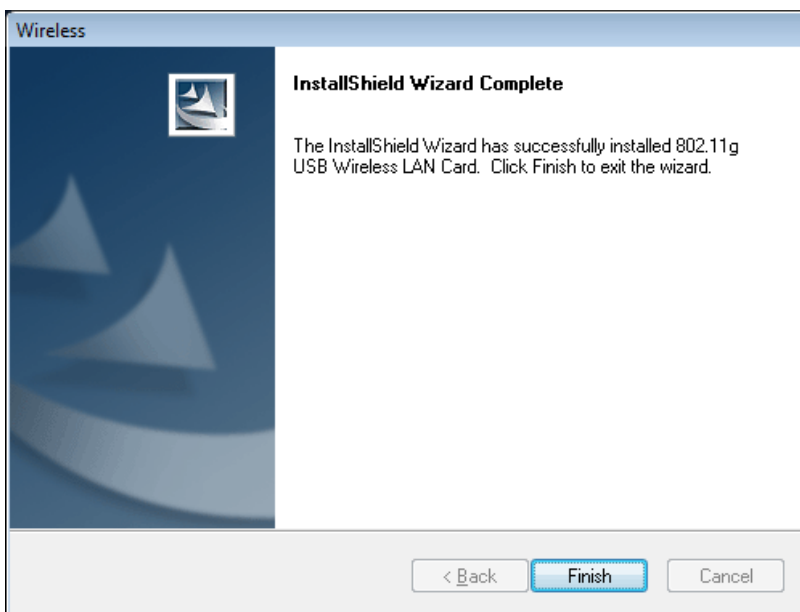
4. The default destination folder will be specified in this page. Also, you can click **Browse...** to choose another folder for storing the driver. Click **Next**.



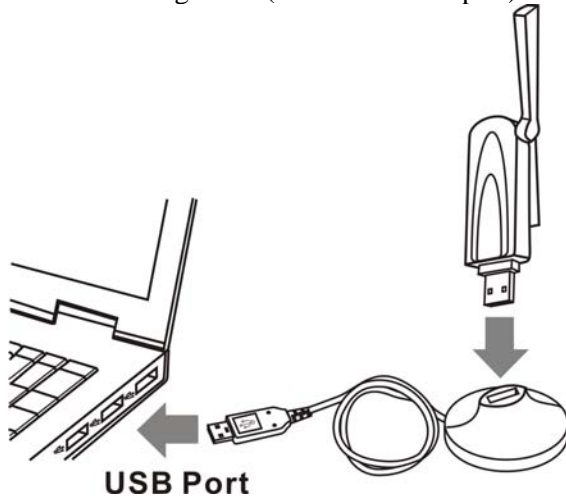
5. Now, the program is executing the installation by copying corresponding files to your computer.



6. When the file copying is completed, the following screen will appear. Please click **Finish**.



7. Now insert Vigor610 (the wireless adapter) into your computer.



8. The system will find out the hardware (wireless LAN card) automatically. When it locates, a message will be shown on the system tray.



9. Now, you can find the wireless LAN card icon in the system tray. Double click it to open the configuration window of Vigor610 wireless adapter.

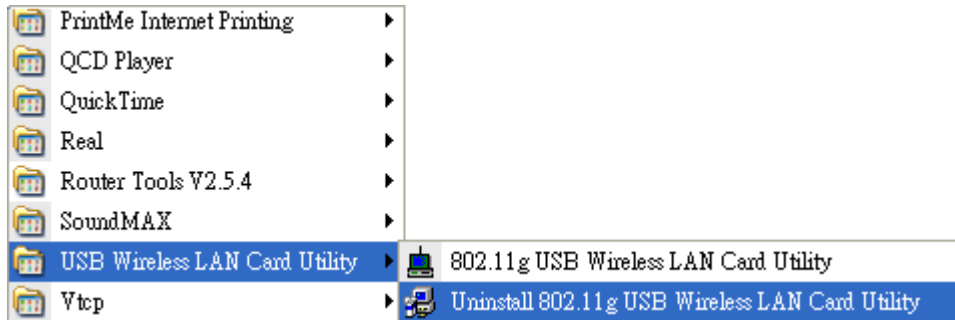


### 3. Uninstalling USB Driver

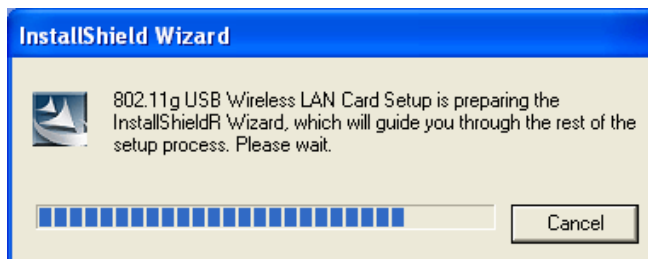
#### For Windows XP

If you want to remove the driver for this wireless card, please do the following:

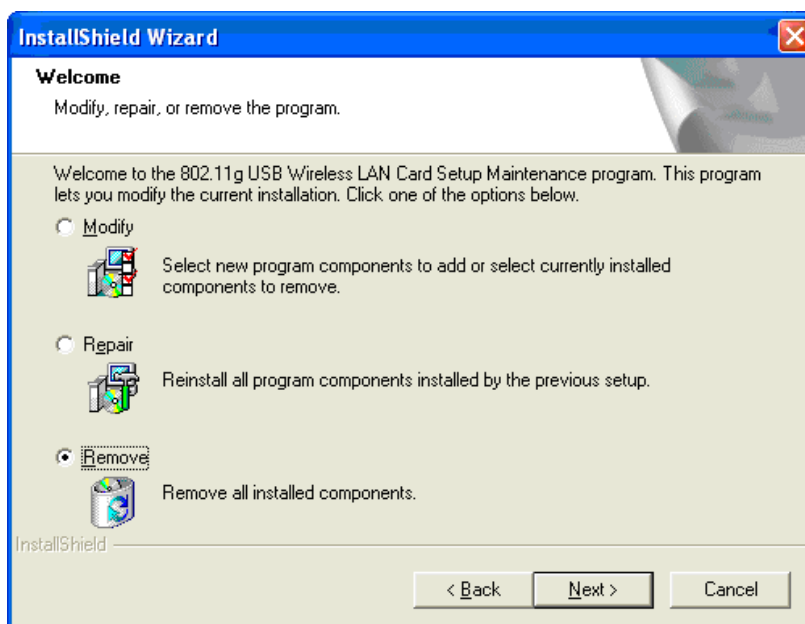
1. Run **Start >> Programs>> USB Wireless LAN Card Utility>>Uninstall 802.11g USB Wireless LAN Card Utility**.



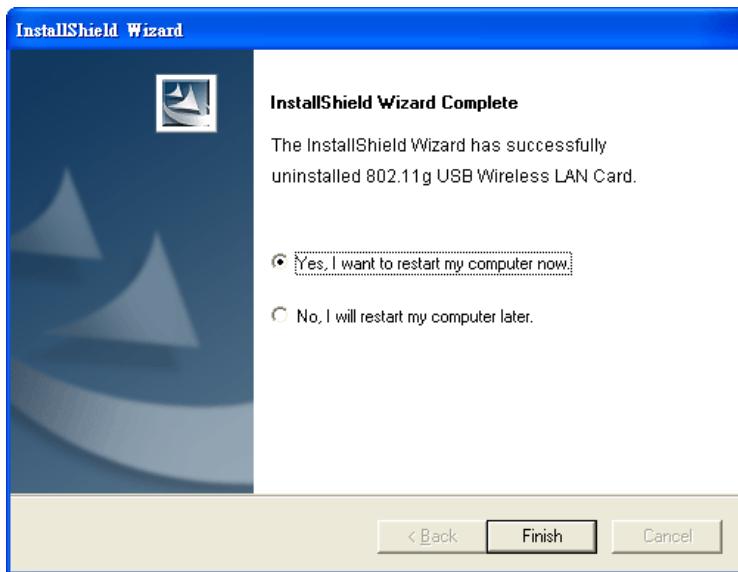
2. The InstallShield Wizard will appear.



3. When the following screen appears, please click **Next**.



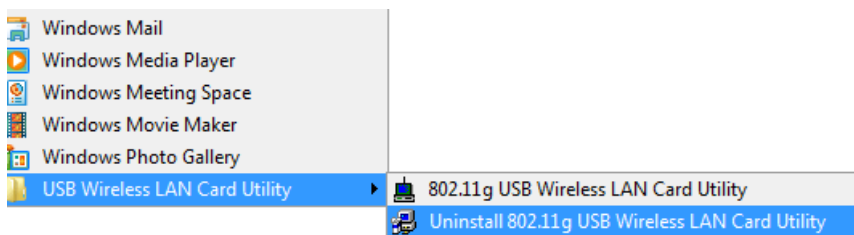
4. The system will start to remove the corresponding files. Then the system will ask you to restart your computer. After choosing the proper setting, please click **Finish**.



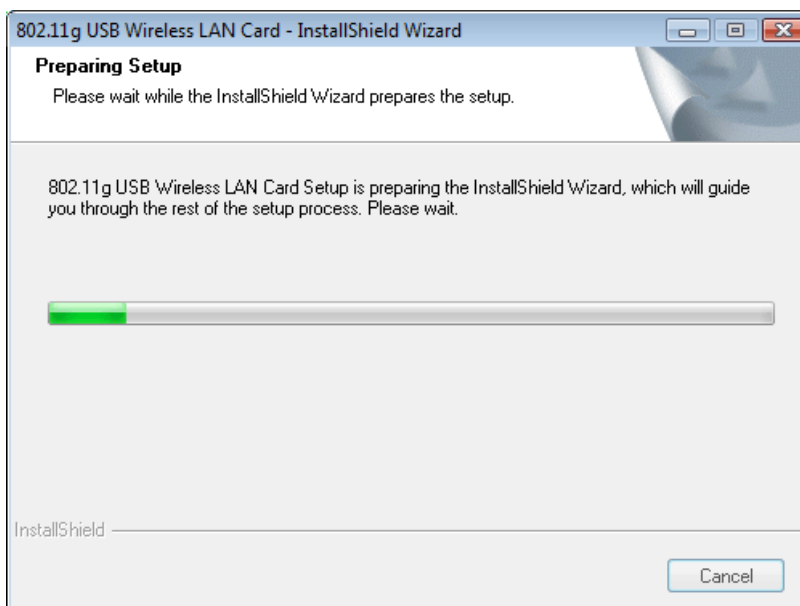
## For Windows Vista

If you want to remove the driver for this wireless card, please do the following:

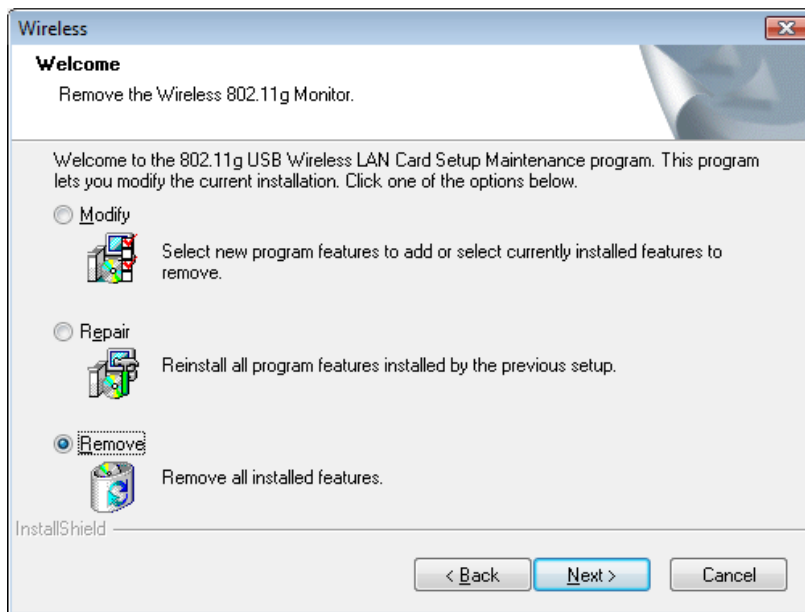
1. Run **Start >> Programs>> USB Wireless LAN Card Utility>>Uninstall 802.11g USB Wireless LAN Card Utility**.



2. The InstallShield Wizard will appear.




3. When the following screen appears, please click **Next**.



4. The system will start to remove the corresponding files.

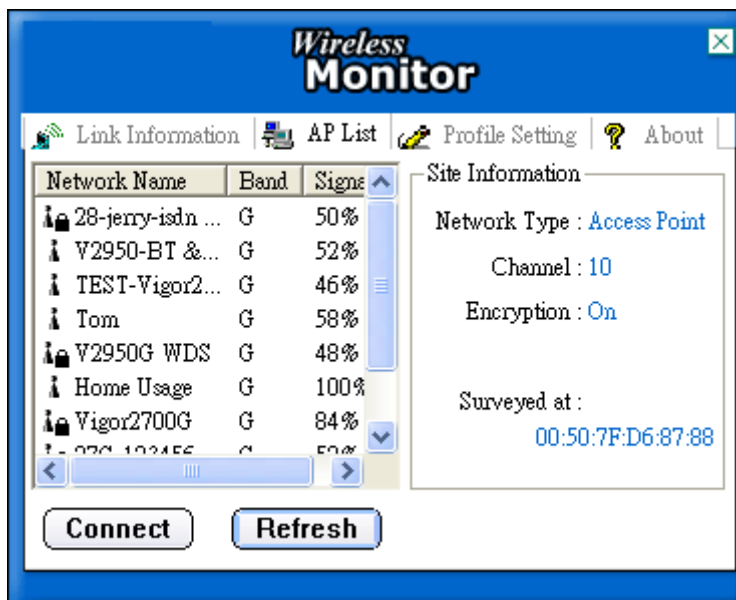
## 4. Configuration for Accessing Internet

Follow the steps below for the client (station) to access Internet quickly and easily.

1. Double click on the wireless LAN card icon  on the system tray. The Wireless Monitor window will appear as the following. X means disconnection and ? means not allowing to access Internet.



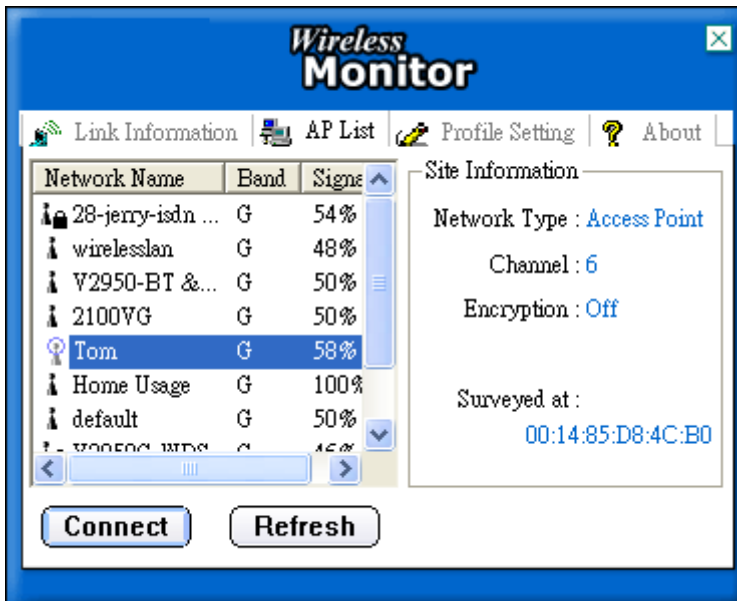
2. Click the tab of AP List. The software will scan and display available wireless AP automatically. *The following figure is just an example. The real available list depends on the AP(s) that found around your computer system.*






- Choose the one (AP) that you want to connect for accessing Internet. In this example, **Tom** is selected. Then, click **Connect**.




- Now your computer can access Internet through the AP selected in Wireless Utility. If you want to set more advanced settings for the wireless card, please refer to User's Manual of Vigor610 in CD.

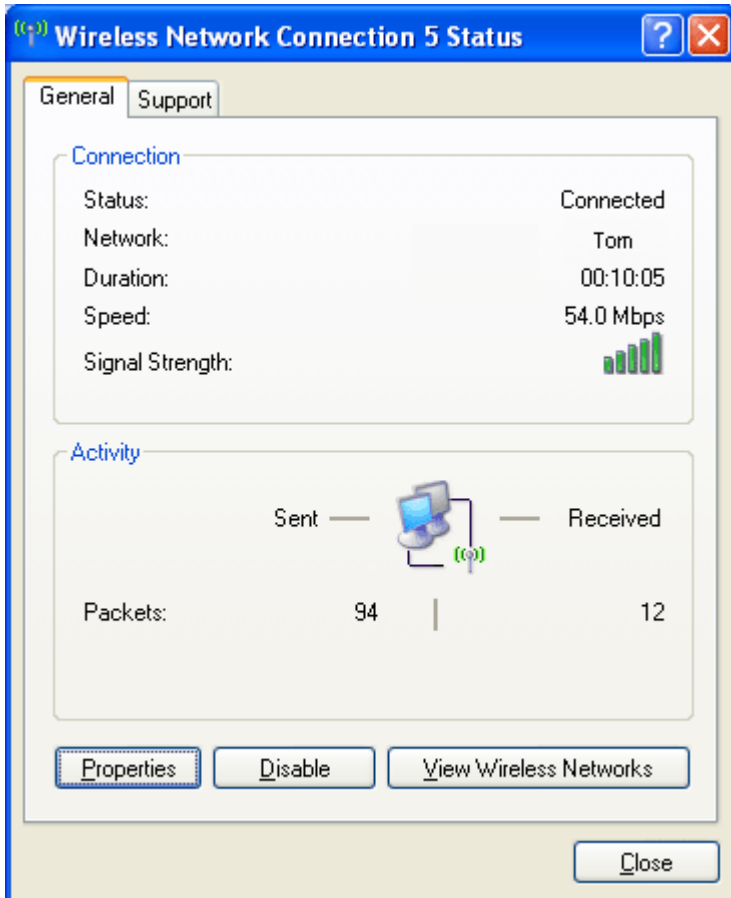


Signal Explanation:

-  means profile settings for that device
-  means connecting to that AP successfully
-  means connecting to that AP failed



5. Check this page to see if the wireless connection is well or not. By the way, you can find the icon  indicating successful connection from the system tray.



6. Click the Link Information tab. Now the station can access Internet through the AP (Tom).

