

Vigor600 Super G Wireless Adapter Quick Start Guide

1 Check Your Package Contents

- ✓ Vigor600 Super G Wireless Adapter Unit
- ✓ CD (driver, utility and user's guide)
- ✓ Quick Start Guide (this document)
- ✓ Extension Cable



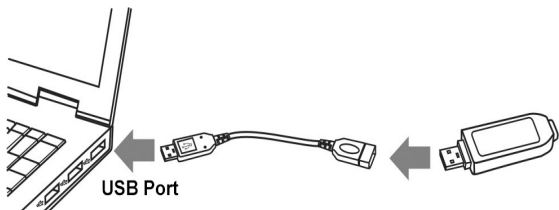
2 Installing the Drivers and Utility from CD

Please do NOT insert your Vigor600 before installing the driver.

1. Insert the CD. An index window will appear automatically. Click the "Install Windows 2000/XP Driver and Utility" or "Install Windows 98SE/Me Driver and the utility" button.



2. Follow the on-screen installation procedure. Connect the wireless adapter to your laptop or desktop as below when instructed.

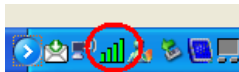


Notice:

- Select "Cancel" when Found New Hardware window appears.
- Select "Continue Anyway" when Software Installation window appears.
- If your operation system is Windows XP, it is recommended for you to install and use the Utility.

3. When it completes, the program will reboot your laptop or desktop and then the utility will automatically start.
4. You can find an icon in the system tray and a short-cut icon on the desktop as shown below.

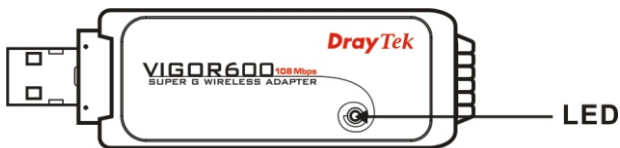
- ✓ Tray icon



- ✓ Desktop shortcut



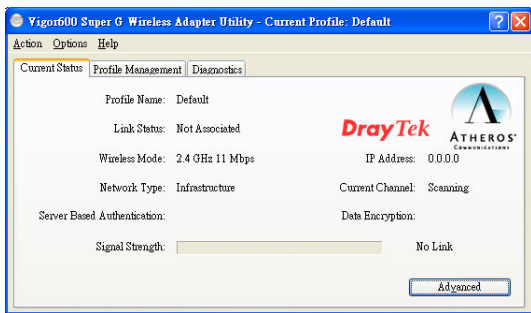
5. Check the LED to assure network connections.



Status	Explanation
Off	The wireless adapter is powered off
Blinking	The wireless adapter is powered on. There is no wireless connection.
Steady green	The wireless adapter is powered on. There is a linked wireless connection.


3 Vigor600 Super G Wireless Adapter Utility

To open the main window of the utility, right click on the tray icon and select “Open Vigor600 Super G Wireless Adapter Utility”. You will see the utility as shown below.



4 Connecting to an Existing Network

To connect to an existing network,

- ✓ In Profile Management tab, click the “Scan” button to scan for available networks.
- ✓ Highlight a “Network Name (SSID)” and click the “Activate” button to connect an available network.
- ✓ Fill in the profile name and the information of this network settings in General, Security and Advanced tabs. Click “OK” to create the configuration profile for that network.
- ✓ Once connected, the tray icon will be . You can click Current Status tab to check the connection status.

(For detailed information, please refer to User’s Guide in CD)

Technical Support

You can find User’s Guide in the package CD.
Please log on our website www.draytek.com for
latest software updates
or contact us at support@draytek.com